



EPS 2000 Low Profile

3.5" Colour Screen Display



Technical Data

- > 2 x CANbus, 1 x RS232 Connection Wi-Fi
- > 7 x Analogue & 3 Digital Inputs Ruggedised
- > 4 x Relay Outputs J1939/NMEA 2000/Tier 4
- >

> Telematics Compatible

> Low Profile Display

> Support

>

USB ports support Data Retrieval IP66 Front & IP67 Rear

EPS 2000 products continue to be successfully deployed in an enormously diverse range of applications where total reliability is vital.

All Nicholas Auto products, bespoke or standard range are backed up by a dedicated central team of specialist engineers able to rapidly adapt any product for a specific application and to provide an unrivalled level of customer support.

The EPS 2000 displays are also supported with a return to base extended 24-month Manufacture warranty against mechanical failure or material defects.

Software

Our SDK is offered for a one-off licence fee from which customers can develop their own bespoke application solution. Available are optional plugins for CAN open, J1939, NMEA 2000, and support hours are included should your engineers need any help along the way.

Alternatively, Nicholas Auto can develop bespoke software to your specification using our experienced in house engineers.

Over the years our engineers have developed software for our displays to run rock crushers & mining machinery, measure performance of spraying equipment, acting as battery monitors, boat gyro stabilisers, plus many more including military and aerospace applications.

Also available is our EPS 2000 Engine Monitor standard software for Industrial and Marine, which can be pre-loaded to our displays receiving and displaying J1939 engine and transmission data, including common Tier4 parameters, with active alarms (from DM1) & NMEA 2000 data, where supported.

Accessories

 **Cable Harnesses**


 **Protective Sun Covers**

 **Mounting Kits**

 **Branding - Labels & Boxes**

ADDRESS

Nicholas Auto Enterprises
34 Saint Anne street Hurleyvale Edenvale

 +27 11 453 5286


 www.nae.co.za



Hardware	
CPU	Freescall iMX 286 (454 MHz ARM926EJ-S)
Flash Memory	128 MB NAND
SDRAM	128 MB
Electrical	
Display	a-Si TFT LCD 3.5"
Resolution	320 (H) x 240 (V) QVGA
Active Area	70.08mm (H) x 52.56mm (V)
Viewing Angle	130/110 degrees from 6 O'clock
Number of Colours	64K
Contrast Ratio	300:1
Brightness	750 NIT (9cd/m2)
Power Requirements	10V to 32V DC
Sounder	Internal Buzzer
Connection	(2) 12 Pin Deutsch DT04-12PA Moulded in Receptacle
Communications	1 X RS232, 2 X CAN Bus 2.0B (1 isolated), USB2.0
Environmental	
Operating Temperature	-40 to +70 Degrees Celsius
Storage Temperature	-40 to +80 Degrees Celsius
Degree of Protection	IP 66 front IP 67 back

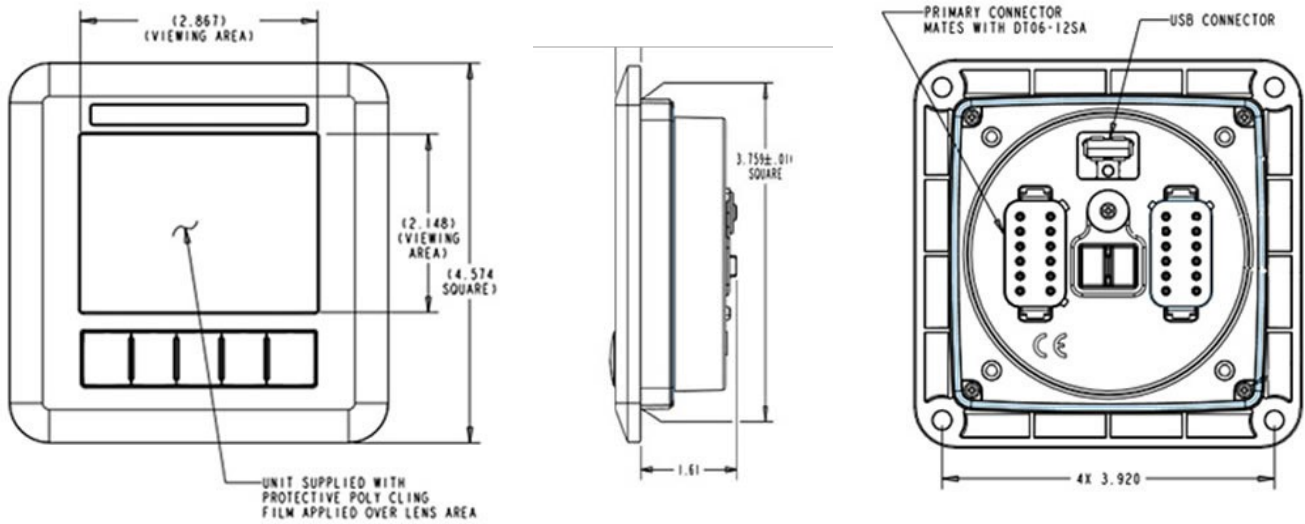
ADDRESS

Nicholas Auto Enterprises
34 Saint Anne street Hurleyvale Edenvale

 +27 11 453 5286

 www.nae.co.za





Connectors

Mechanical

Case Material	ABS
Case Colour	Black
Dimensions	116mm (W) x 116mm (H) Front x 41mm rear (D) and 96mm rear (WxH)
Part Number	
900355_LP	EPS 2000 LP - 3.5" Colour Screen Low Profile Display

3.5" Colour Screen Display

ADDRESS

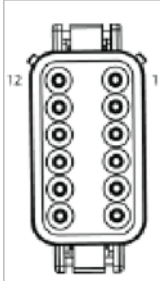
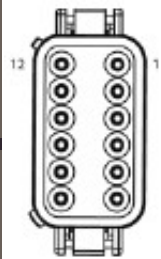
Nicholas Auto Enterprises
34 Saint Anne street Hurleyvale Edenvale

+27 11 453 5286

www.nae.co.za



Primary		Secondary	
1	Ground	1	Sensor 1 Analog Input
2	Ground & Power ¹	2	Sensor 2 Analog Input
3	Relay/Solenoid Output 1	3	Sensor 3 Analog Input
4	Relay/Solenoid Output 2	4	Sensor 4 Analog Input
5	Isolated CAN Supply (-)	5	Sensor 5 Analog Input
6	Isolated CAN Supply (+)	6	Sensor 6 Analog Input
7	Isolated CAN Data H	7	Sensor 7 Analog Input
8	Isolated CAN Data L	8	Digital Input/Flow Sensor 1
9	Relay/Solenoid Output 3	9	Digital Input/Flow Sensor 2
10	Relay/Solenoid Output 4	10	Tachometer Input
11	Primary CAN Data L	11	RS232 Receiver
12	Primary CAN Data H	12	RS232 Transmit



Note 1. (10-32V DC) Supply should be protected by 1A – Rated circuit breaker/ fuse.

IMPORTANT NOTICE
 Safety Warning: Please note analogue input voltages should not exceed the supply voltage or damage may occur. No power should be present on the

harness during connection. USB port should not be used for charging external equipment such as mobile phones.

Connect Harness 1 (Primary) noting correct orientation of connector. Ensure it is fully mated so the connector latches into place. Then connect Harness 2 (Secondary) note correct orientation of connector. Ensure it is fully mated so the connector latches into place.

ADDRESS

Nicholas Auto Enterprises
 34 Saint Anne street Hurleyvale Edenvale

+27 11 453 5286

www.nae.co.za

